

# TCU UNDERGRADUATE EMPLOYMENT OVERVIEW

THE WALL  
STREET  
JOURNAL.

## No. 18

*in the nation for student  
engagement by the Wall  
Street Journal*

### 2020 The Princeton Review

*#4 Best Schools for Internships  
(Private Schools)  
#6 Best Alumni Networks  
(Private Schools)  
#11 Best Career Services (All  
Schools)  
Named a best value college*

### Poets & Quants

Rankings (Undergrad  
Business)

*#2 in Texas, Undergraduate Starting Salaries  
#8 in the U.S. Careers & Employment  
#9 in the U.S. Best Academic Experience  
#10 in the U.S. Best Careers and Employment  
(Undergraduate Business)  
#31 in the U.S. Best Undergraduate Business Program*

## \$60,833

AVERAGE STARTING SALARY

## 87%

EMPLOYED OR ENROLLED IN  
GRADUATE SCHOOL WITHIN SIX  
MONTHS OF GRADUATION

## 4 out 5

GRADUATING HAD INTERNSHIPS

## 38

FULBRIGHT SCHOLARSHIPS  
SINCE 2010

## 116

 UNDERGRADUATE PROGRAMS

## 65

 MASTER'S LEVEL PROGRAMS

## 38

 DOCTORAL PROGRAMS

STUDENT  
AFFAIRS

Center for Career &  
Professional Development

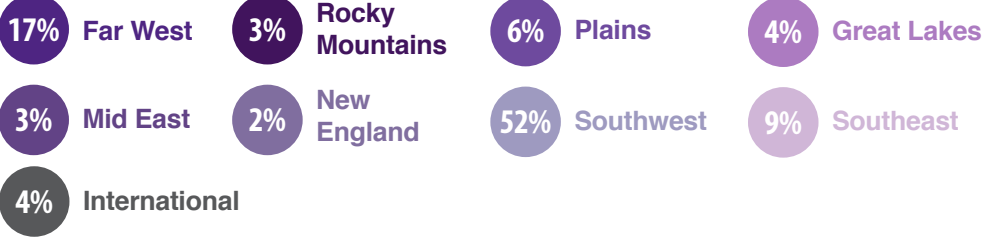
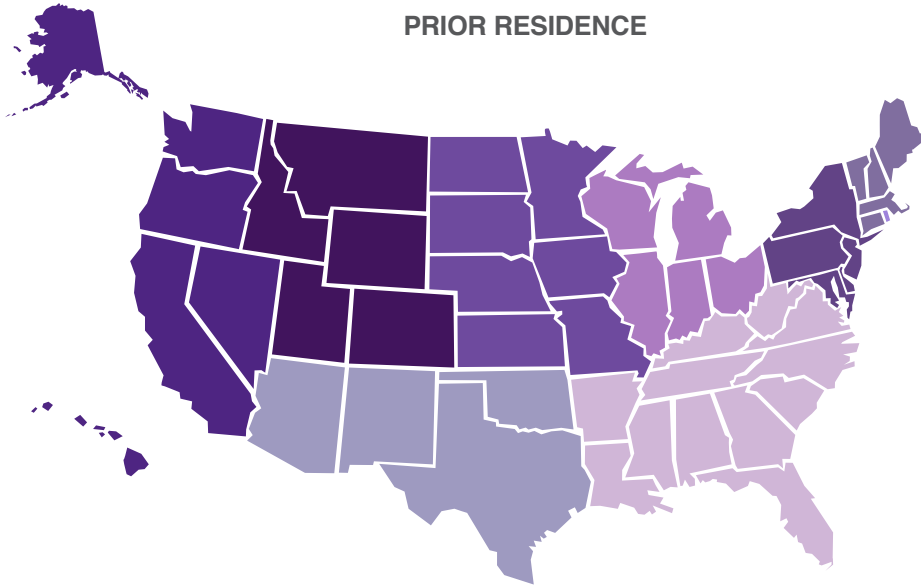
[careers.tcu.edu](http://careers.tcu.edu)

817-257-2222

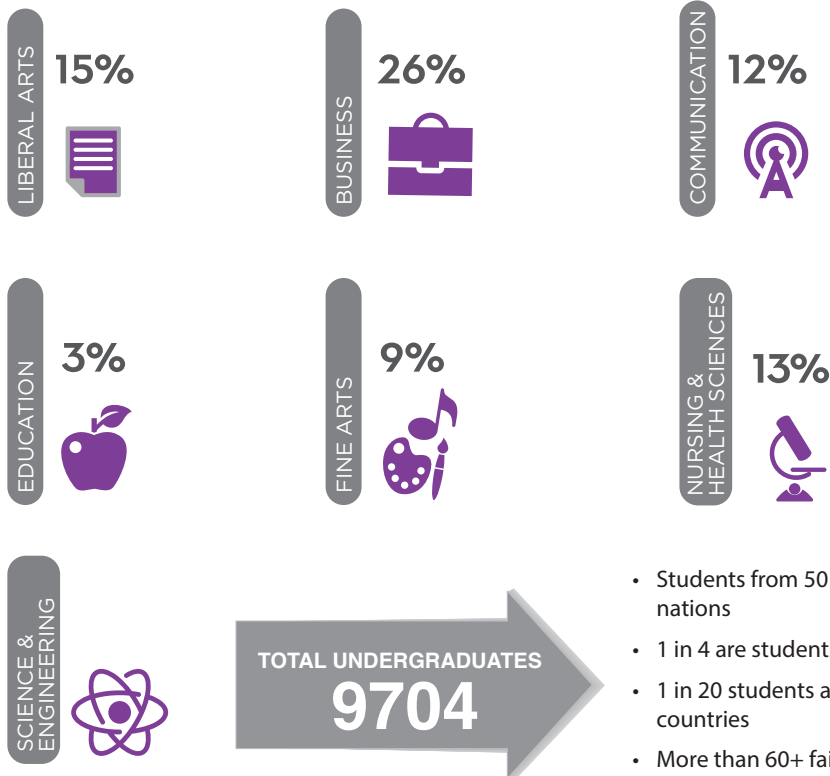


# TOTAL UNDERGRADUATE ENROLLMENT

## PRIOR RESIDENCE



## TOTAL UNDERGRADUATE PERCENTAGE BY COLLEGE/SCHOOL



- Students from 50 states and 76 nations
- 1 in 4 are students of color
- 1 in 20 students are from other countries
- More than 60+ faith traditions represented



## WHAT'S A HORNERD FROG?



### HORNERD FROG (noun)

1. A lizard.
2. The State Reptile of Texas.
3. At TCU, our Horned Frogs are ethical leaders and responsible citizens in the global community.

TCU values academic achievement, personal freedom and integrity, the dignity and respect of the individual, and a heritage of inclusiveness, tolerance and service.

As a values centered university, we're committed to unleashing our Horned Frogs' individual potential with leadership at the core and innovation in our spirit.



# UNDERGRADUATE EMPLOYMENT

## HIGHLIGHTED EMPLOYERS

49 Financial	Ethicon	Oracle
Accenture	Exxon Mobil	Parkland Hospital
ACH Child and Family Services	Facebook	Paycom
Adobe Systems	Fidelity Investments	Peace Corp
ADP	Firestone & Robertson	Pegasus Theatre
Alcon	Distilling Co.	PepsiCo
Aldi	Fort Worth ISD	PhysAssist Scribes
AlphaSights	Fossil	PMG Advertising Agency
Allstate	Fox Sports	PulteGroup
Alvarez & Marsal	GC Marketing	PWC
Amazon	Geico	Q Investments
Amegy Bank	General Electric	RSM
American Airlines	Goldman Sachs	Sabre
Aon	Google	Salesforce
Apple	Harris Methodist Hospital	Schneider Electric
AT&T	H-E-B	Sewell Automotive Companies
Bain	Hewlett Packard Enterprise	Simpli.fi
Bank of America Merrill Lynch	HFF	Sky Ridge Medical Center
Baylor Scott & White	Houlihan Lokey	Southwest Airlines
BNSF Railway	Houston Astros	St. Andrews Catholic School
BOK Financial	IBM	St. Davids Medical Center
Burns & McDonnell Engineering	IHS Markit	Starbucks
Call Box	Insight Global	State Farm
Catholic Charities	ISN	Southwest Airlines
CBRE	Jacobs Engineering Group	Target
CBS	John Peter Smith Hospital	TD Ameritrade
Cerner	Johns Hopkins Hospital	Teach For America
Children's Health Dallas	JPMorgan Chase & Company	Techtronic Industries (TTI)
CIA	JTaylor	Texas Christian University
Citi	Kansas City Chiefs	Texas Health Resources
City of Fort Worth	Kimbell Art Museum	Texas Instruments
Colorado Children's Hospital	Klein Tools	Texas Rangers
Cook Children's Medical Center	KPMG	TEXTRON (Bell, Aviation)
Corgan	Lockheed Martin	The Hershey Company
Corning Inc.	Lockton Companies	The Marketing Arm
Credit Suisse	Main Street Energy Company	The Richards Group
Cushman & Wakefield	Martin Sprocket & Gear	The Walt Disney Company
David Weekley Homes	Mary Kay	T-Mobile
Dallas Cowboys	Meltwater Group	TracyLocke
Dallas ISD	Medical City HCA Health	Transwestern
DaVita Healthcare Partners	Memorial Hermann Hospital	Viacom
Dell	Methodist Dallas Medical	U. S. House of Representatives
Deloitte	Microsoft	United States Air Force
Disney	National Life Group	United States Army
DSG Consulting	NBC Universal Television	US Health Group
E & J Gallo Winery	Neiman Marcus	UT Southwestern Medical Center
Enterprise Holdings	Nike	Vanderbilt University Medical Center
Epsilon	Nordstrom	VMG Health
Ernst & Young	North Texas PGA	Walmart

# TCU CENTER FOR CAREER & PROFESSIONAL DEVELOPMENT

## HOW ARE STUDENTS BEING ASSISTED?

TCU has Career Consultants are trained to address the specific needs of students based on their major and career goals. Annually, Career Consultants complete over 2000 scheduled one-on-one advising appointments with students and alumni assisting them in their career and professional development needs.

- Personal Branding and LinkedIn Training
- Major, Career, and Employment Research
- Career and Personality Assessments
- Personalized Resume/Cover Letter Reviews
- Mock Behavioral, Case, and Virtual Interviews

## COMPREHENSIVE EMPLOYER ENGAGEMENT SERVICES

The Center for Career & Professional Development offers comprehensive services to help connect employers with TCU students and alumni who best fit their organization. The Career Center professional staff work with employers across the country to develop recruitment strategies to their needs and host more than five hundred employers on-campus annually through Career & Internship Expos, industry networking events, and information sessions and panels. More than 1500 campus interviews are conducted each year by employers looking to hire Horned Frog students and alumni.

[careers.tcu.edu/hire-a-frog](https://careers.tcu.edu/hire-a-frog)

FrogJobs Powered by Handshake is the online job posting and event management system that connects TCU students and alumni with employers looking to hire Horned Frogs. The Handshake platform is the largest early talent recruiting platform connecting employers, student, alumni, and colleges in one place. FrogJobs Powered by Handshake allows students and alumni to get hired for jobs and internships, get discovered by employers and get connected with peers for tips and advice. Students and alumni may request appointments with Career Consultants, register for career fairs or events, and schedule interviews.

[tcu.joinhandshake.com](https://tcu.joinhandshake.com)



STUDENT  
AFFAIRS

Center for Career &  
Professional Development

[careers.tcu.edu](https://careers.tcu.edu)

817-257-2222